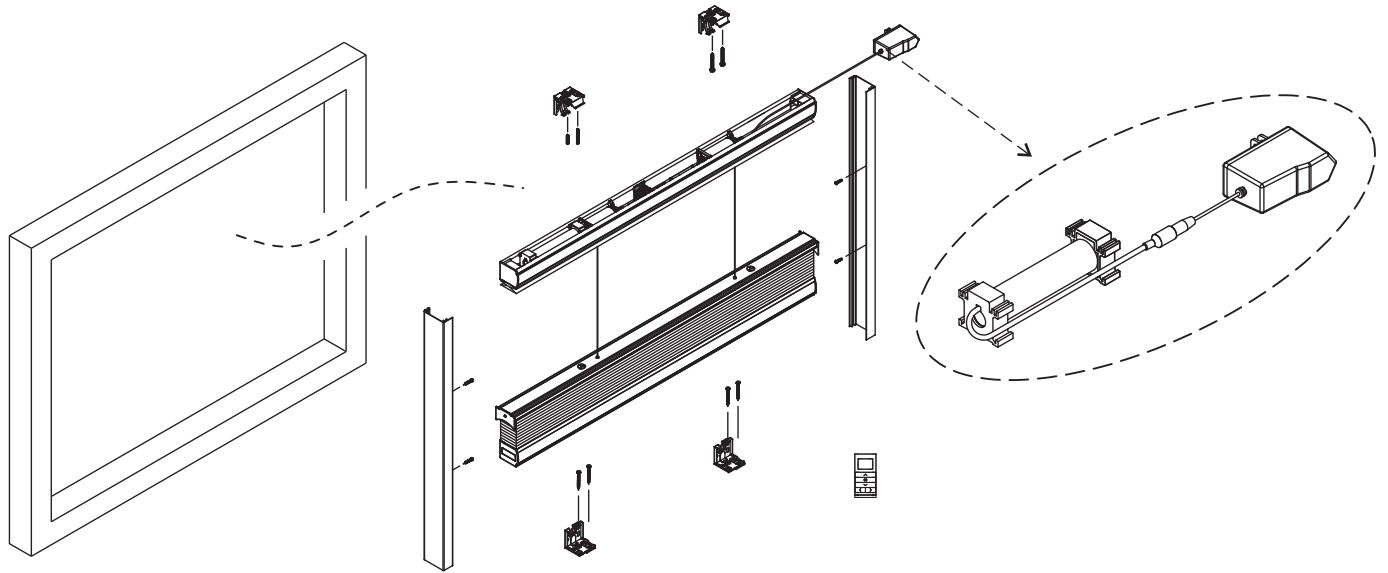
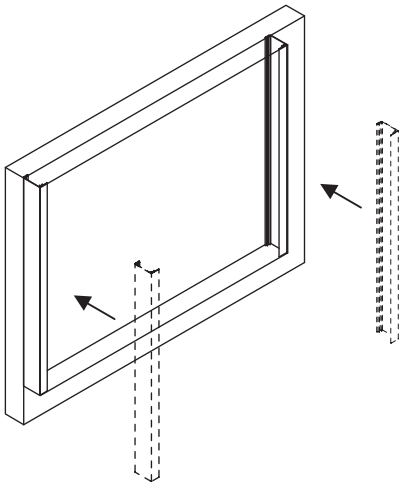


# Installation for Wireless Remote Cellular Shade Skylight - Adapter



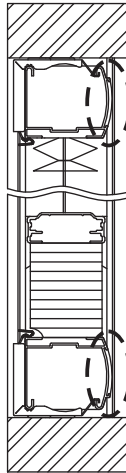
1

Place the side rails in the window frame.



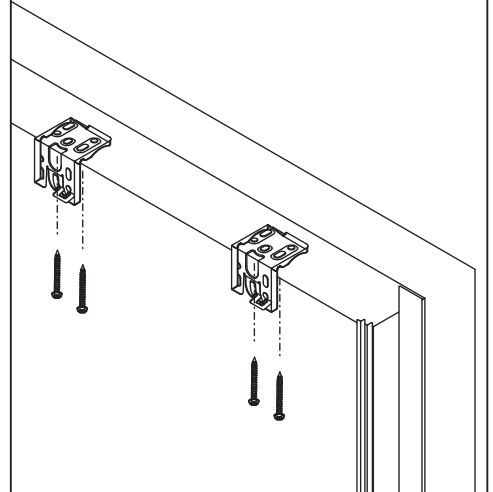
2

Install the head rail brackets to be positioned to let the front side of window shade can be affixed to the side rails.



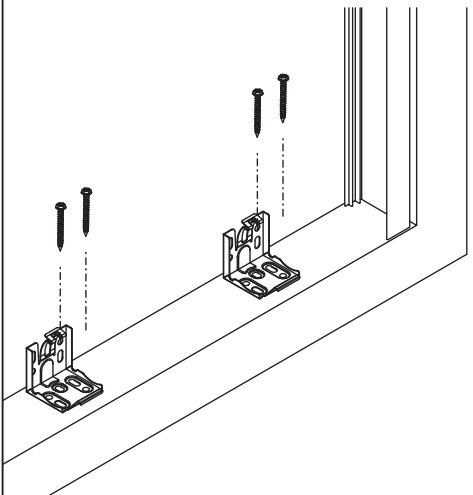
3

Lock the head rail brackets into the top side of the window frame.



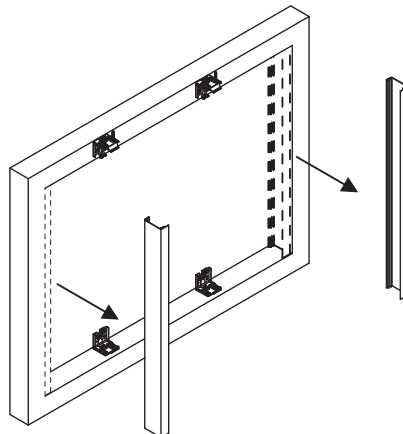
4

Lock the head rail brackets into the bottom side of the window frame.



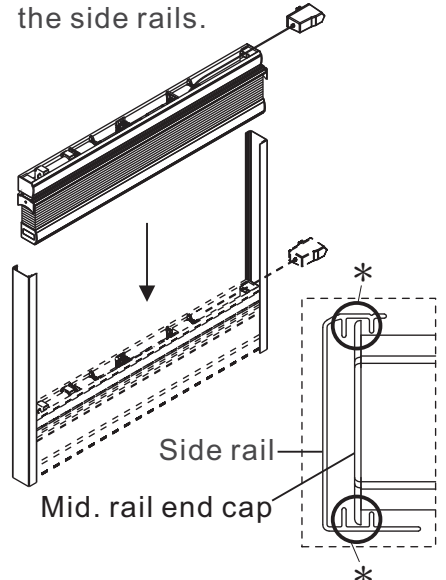
5

Remove the side rails.



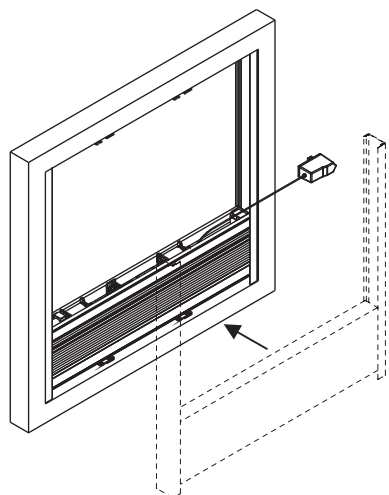
6

Install the window shade into the side rails.



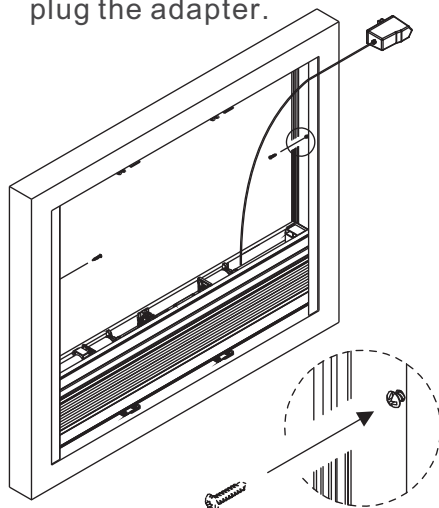
7

Install window shade and side rails into the window frame.



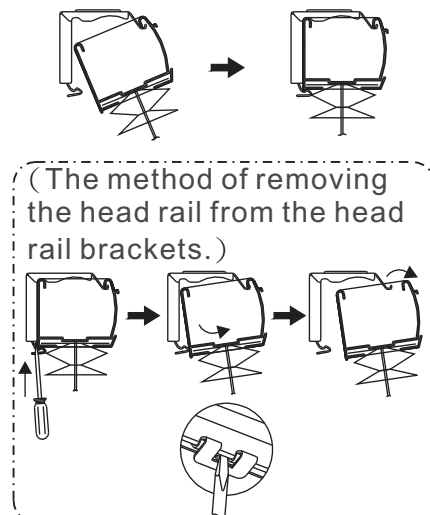
8

Lock a screw on each of the side rails (not locked), and plug the adapter.



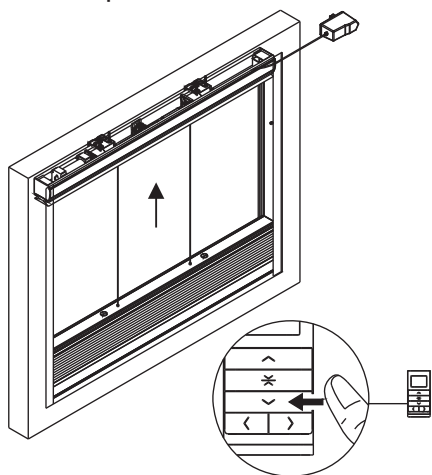
9

The method of installing the head rail into the head rail brackets.



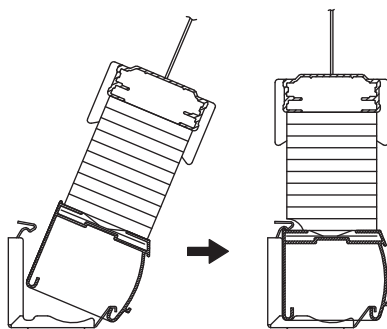
10

Press the down button on the remote control, install the head rail into the head rail brackets at the top.



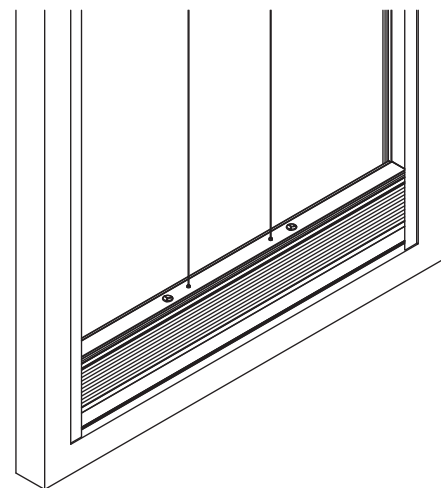
11

The method of installing bottom rail into the head rail brackets.



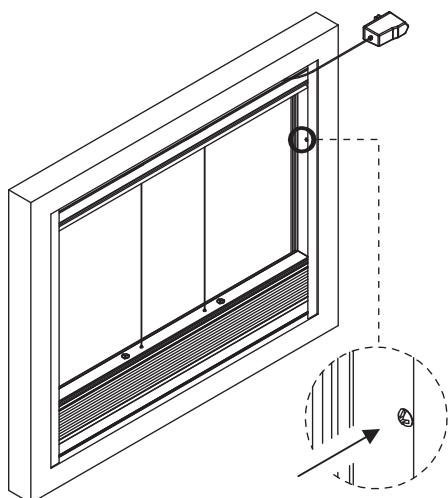
12

The bottom rail is installed into the head rail brackets at the lower end.



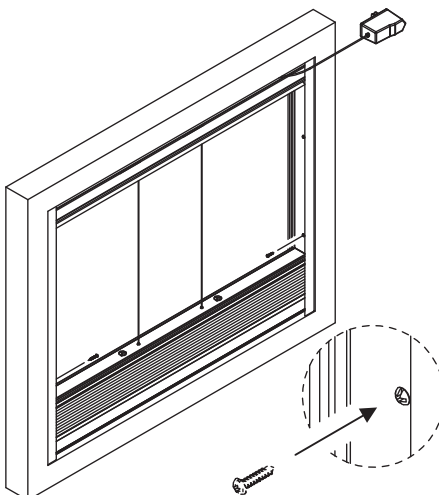
13

Lock the side rail screws.



14

Lock the other side rail screws (locking tightly).



15

Assembly is finished.

